

## IUTOX 17th International Congress of Toxicology (IUTOX ICTXVII, IUTOX ICT2025)

### Tour Route Plan Chengdu Tour Route

#### 1. Tour Route Planning

- **DAY 1:**  
Depart + Kuanzhai Alleys + Chunxi Road
- **DAY 2:**  
Chengdu Research Base of Giant Panda Breeding + DuFu Thatched Cottage
- **DAY 3:**  
Temple of Marquis Wu + Return

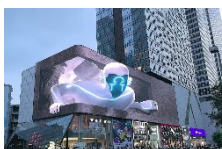
#### 2. Service Content

##### 2.1 Fees Included:

- **Transportation:** Round-trip shuttle buses between the airport/railway station and the destination, as well as shuttle buses between scenic areas.
- **Hotel:** Accommodation fees are included.
- **Catering:** Not included, recommended only
- **Tickets:** The fee for the first entrance tickets of the scenic spots.
- **Guide:** Full-course explanation service by an English tour guide.

##### 2.2 Fees Not Included:

- Personal expenses incurred during the itinerary (including non-free catering fees on transportation means, excess baggage fees, laundry, telephone, and charges for beverages and alcoholic drinks during the accommodation period, personal medical expenses for illness or injury, etc.), as well as self-paid items not included in the itinerary.



### 3. Schedule

#### 3.1 DAY 1: Depart + Kuanzhai Alleys + Chunxi Road

- **Transportation:** Train (Beijing - Chengdu)

For trains arriving before 14:00, unified ticket purchase (ticket included)

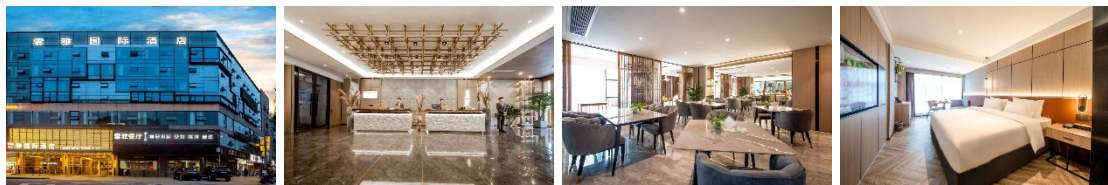
- **Station Pick-up Service**

Upon arrival, the guide will meet you at the station and take the bus to the hotel to check in

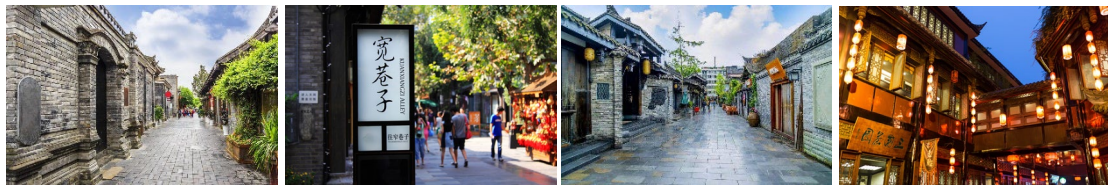
- **Check in**

Yunya International Hotel (Kuanzhai Alley Jinli Branch)

Address: Floor 3-5, Building 2, No.128 Jinli Middle Road, Qingyang District, Chengdu



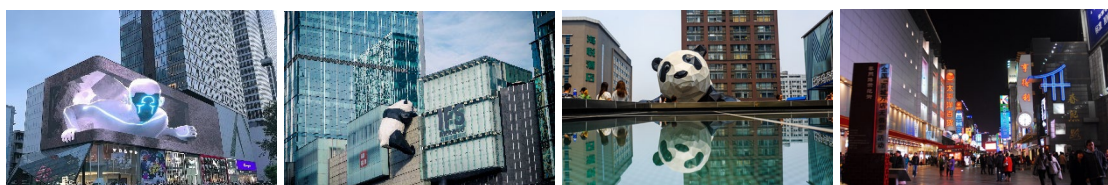
- **Attraction [ Kuanzhai Alleys ]** (Admission is free)



The Kuanzhai Alleys in Chengdu are composed of three alleys: Kuan Alley, Zhai Alley and Jing Alley. They are relatively large-scale ancient streets from the Qing Dynasty that have been preserved in Chengdu. Together with the Daci Temple and the Wenshu Monastery, they are known as the three major historical and cultural protection areas in Chengdu.

Its history can be traced back to the Kangxi period of the Qing Dynasty. It was the site of Manchu Town built to strengthen defense, and later gradually evolved into a characteristic block integrating residence, commerce and culture. In 2003, Chengdu launched a renovation project. In 2008, it was opened to the public as a symbol of post-earthquake tourism recovery and became one of the outstanding representatives in the first batch of "Sichuan Cultural and Creative Bazaars".

- **Attraction [ Chunxi Road ]** (Admission is free)

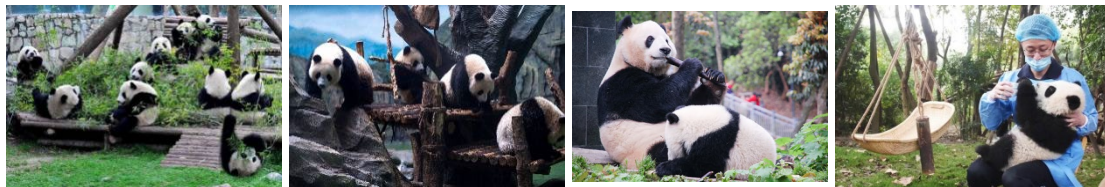


Chunxi Road in Chengdu, located in Jinjiang District, Chengdu, is one of the most prosperous commercial streets in Chengdu and is known as the "Century-old Golden Street". It was first built in 1924 under the auspices of Yang Sen, a warlord in Sichuan Province. It got its name from the sentence "All the people are bustling about, as if they were ascending a spring platform" in the Tao Te Ching, implying commercial prosperity and the well-being of the people.

After a hundred years of development, Chunxi Road has become a commercial landmark of Chengdu. With a total area of 2.45 square kilometers and 46 key buildings, it has gathered numerous shopping centers, high-end brands and niche designer stores, forming a huge and mature commercial system.

### 3.2 DAY 2: Chengdu Research Base of Giant Panda Breeding + DuFu Thatched Cottage

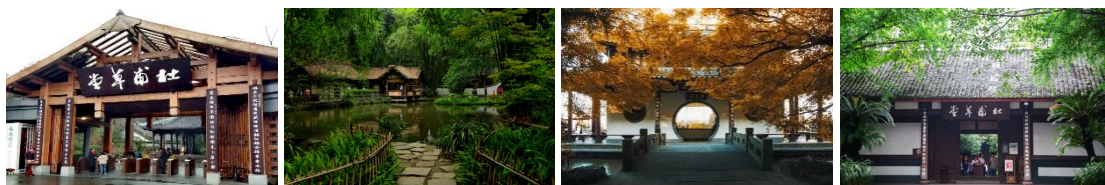
- Attraction [ Chengdu Research Base of Giant Panda Breeding ] (Tickets included)



The Chengdu Research Base of Giant Panda Breeding is located in Chenghua District, Chengdu. It is a world - renowned institution for giant panda conservation and research. The base covers a vast area and mimics the wild ecological environment of giant pandas. It is equipped with facilities such as giant panda delivery rooms, breeding areas, and scientific research laboratories, and is hailed as "the Natural Paradise of National Treasures".

The base is home to a large number of giant pandas and has the world's largest artificially - bred population of captive giant pandas. Through scientific breeding programs and conservation measures, the base has successfully bred a large number of giant panda cubs, providing a solid guarantee for the population recovery and reproduction of giant pandas.

- Attraction [ DuFu Thatched Cottage ] (Tickets included )

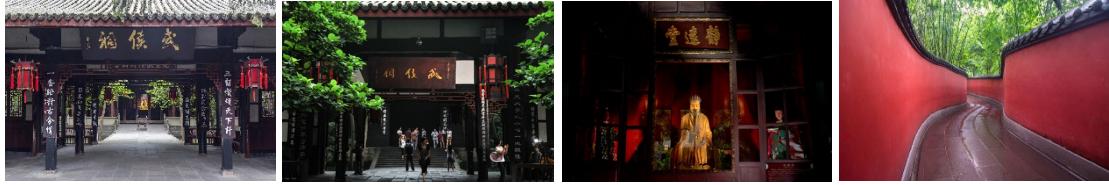


The Du Fu Thatched Cottage in Chengdu is the former residence of Du Fu. In 759, Du Fu came to Sichuan and lived here to avoid the An Lushan-Shi Siming Rebellion. During the nearly four years, he created more than 240 poems, making the thatched cottage a cultural landmark. The architecture of the cottage has the style of folk houses in Western Sichuan, and the garden is exquisite.

There are calligraphy works and documents collected inside, as well as a memorial hall, etc. Now it is a cultural relic protection unit, a first-class museum and a 4A-level scenic area, and it is a wonderland for people to experience the charm of Du Fu's poems and traditional art.

### 3.3 DAY 3: Temple of Marquis Wu + Return

- Attraction [ Temple of Marquis Wu ] (Tickets included)



The Temple of Marquis Wu in Chengdu, located in Wuhou District of Chengdu, is a temple where emperors and ministers are worshipped together in memory of heroes of the Shu Han Dynasty such as Liu Bei and Zhuge Liang. It was first built in the first year of Zhangwu in the Shu Han Dynasty (221 AD) and is the only museum of Three Kingdoms historical sites in China and well-known globally.

The buildings in the temple combine the simplicity of the Han Dynasty and the exquisiteness of the Ming and Qing Dynasties. The main buildings include the Hall of Liu Bei where the statues of Liu Bei, Guan Yu and Zhang Fei are enshrined, and the Hall of Zhuge Liang where there is a statue of Zhuge Liang holding a feather fan. Cultural relics such as the stone carving of "Memorial on Sending Out the Troops" are displayed in the temple, showing Zhuge Liang's wisdom.

The Temple of Marquis Wu is not only a symbol of the culture of the Three Kingdoms but also an academic base, housing a large number of documents related to the Three Kingdoms. The adjacent Jinli Ancient Street allows people to experience the folk customs of Chengdu and taste special local snacks.

With its profound culture and unique architecture, the Temple of Marquis Wu has become an important cultural landmark in Chengdu, attracting enthusiasts and tourists to visit.

- Return

Attractions - Airport/train station

## 4. Customized-tour

If you would like to customize other tour routes, please contact us.

E-mail: [ICT2025@bjggc.cn](mailto:ICT2025@bjggc.cn)